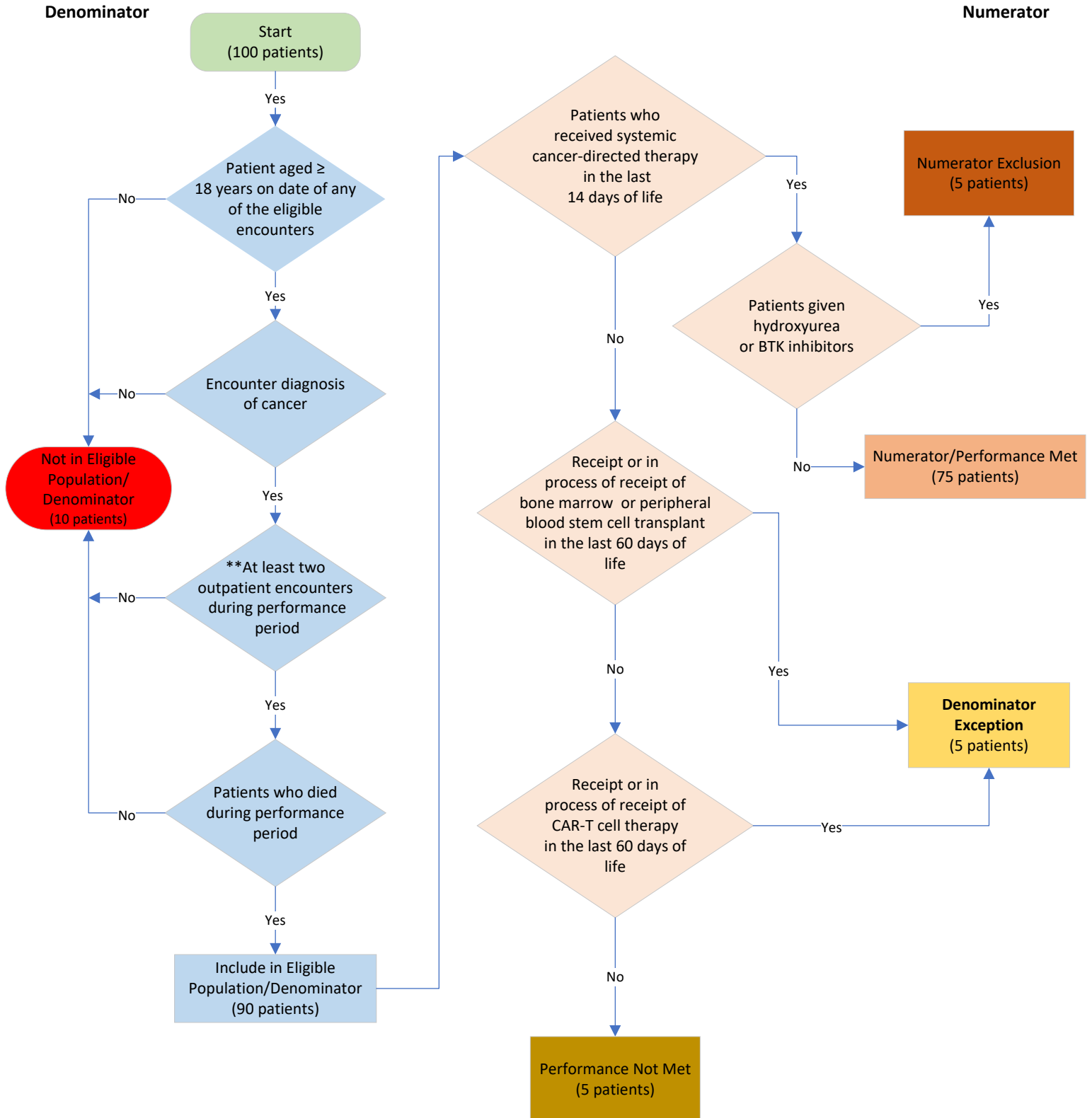


**Percentage of Patients who Died with Cancer Receiving Systemic Cancer-Directed Therapy in the Last 14 Days of Life  
(lower score – better)**

Measure Flow – Registry

Disclaimer: Refer to the measure specification for specific coding and instructions to submit this measure.



**Performance Rate**

Numerator (Performance Met)

75

Denominator – Denominator Exceptions

85

= 88.2%

\*\*Encounters coded with telehealth modifier GQ, GT, 95, or POS 02, or POS 10 are allowed for both visits.